

RiSOLVE

for 3D Digital Scene Capture

- **fully automatic registration**
- **fastest true-color scanning workflow**
- **calibration, registration, and filtering tools**
- **2D measureable PDF plots**
- **simple data export**

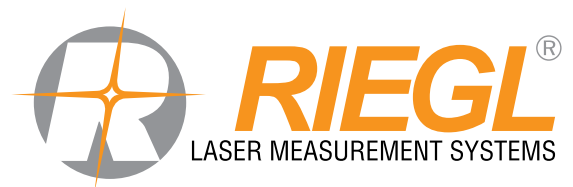
Combined with the one-touch workflow of the *RIEGL V-Line* terrestrial laser scanners, RiSOLVE enables fully automatic registration and colorization of scan data. This streamlined process is the fastest solution to acquire, register, and colorize outdoor 3D scan data. With additional tools for filtering, scene animation and measurements, RiSOLVE enables rapid turnaround of critical information.

RiSOLVE takes the complexity out of the registration process by utilizing positioning information provided by sensors integrated into *RIEGL's* VZ-Line scanners. Combining position estimation utilizing this onboard sensor data along with a new algorithm for aligning scans without reflectors or precise positioning enables a fine adjustment of all scans to produce seamless fully registered point clouds.

By automatically registering, adjusting, and colorizing scans, RiSOLVE simplifies the 'field to office' exchange and provides the fastest workflow for true-color 3D Scene Scanning. In addition to automation, RiSOLVE provides tools for point cloud filtering, 2D PDF generation and creation of panoramic animations.

- **Accident Investigation**
- **Architecture**
- **Rapid Deployment Scene Capture**
- **Emergency Management Planning**
- **Local Area Mapping**
- **Utility Asset Mapping**

visit our website www.riegl.com





Scan

- 20+ million measurements
- 5 high-resolution images
- precise inclination data
- GNSS position
- compass bearing

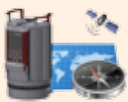
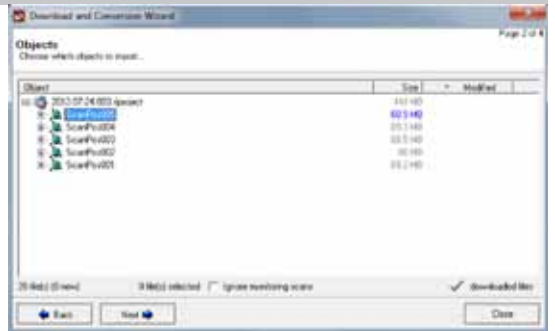
**3 minutes
per position**



Import

- download project
- import from USB flash drive
- create project structure

**1 minute
per position**



Register

- Automatic Registration:
- 1) position estimation via: inclination, GPS & compass
 - 2) course registration
 - 3) fine adjustment

**less than
1 minute
per position**



Color

- One-Click Color:
- utilizes calibrated images
 - automatically adjusts frame
 - colorizes point cloud

**less than
1 minute
per position**



Plot

- automatically selects region
- exportable to PDF
- plot to image



see the video: www.youtube.com/user/rieglms



RIEGL Laser Measurement Systems GmbH
 Riedenburgerstraße 48
 3580 Horn, Austria
 Phone: +43 2982 4211 | Fax: +43 2982 4210
 office@riegl.co.at
 www.riegl.com

RIEGL USA Inc.
 Orlando, Florida | info@rieglusa.com | www.rieglusa.com
RIEGL Japan Ltd.
 Tokyo, Japan | info@riegl-japan.co.jp | www.riegl-japan.co.jp
RIEGL China Ltd.
 Beijing, China | info@riegl.cn | www.riegl.cn

www.riegl.com